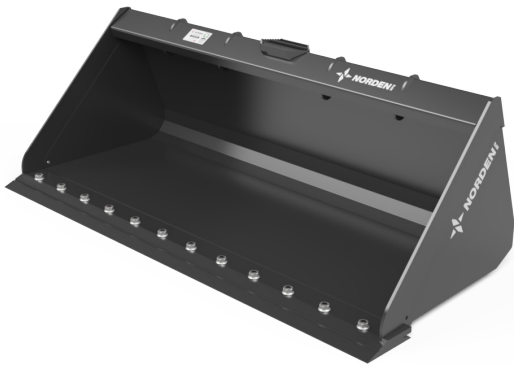




NORDEN MFG

Owner Manual

Skid Steer Buckets



SSB-72US



SSB-78LL



SSB-84US

MADE IN THE USA 

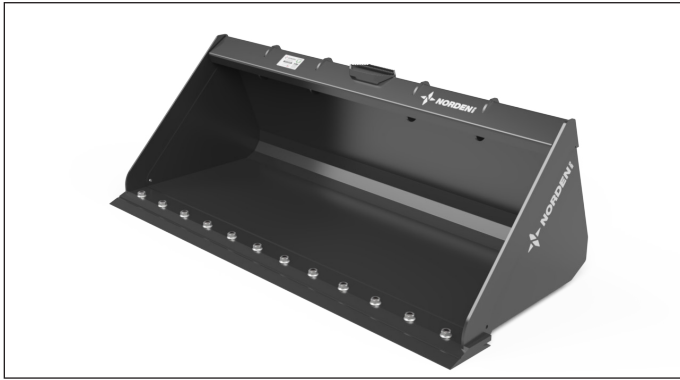
Read, Understand, and Follow this manual which provides information and procedures to safely operate and maintain the attachment.



CONTENTS

1. INTRODUCTION	4
1.1 Intended Usage	4
1.2 Operator Orientation	4
1.3 Specifications	4
1.3.1 SSB-72US Specifications	4
1.3.2 SSB-78LL Specifications	4
1.3.3 SSB-84US Specifications	5
1.4 Serial Number Location	5
1.5 Product Improvements	5
1.6 Disposal of Equipment at End of Useful Life	5
1.7 Unanswered Questions	5
2. SAFETY	6
2.1 General	6
2.2 Safety Alert Symbol	6
2.3 Safety Icons Nomenclature	7
2.3.1 Personal Protection / Important Information	7
2.3.2 Prohibited Actions	7
2.3.3 Hazard Avoidance	7
2.4 General Safety	8
2.5 Machine Related Safety	8
2.6 Safety Decals	8
2.7 Operation Safety	8
2.8 Transporting Safety	8
2.9 Storage Safety	8
2.10 Maintenance Safety	8
2.11 Training	8
2.12 Authorization / Training Sign-Off Form	9
3. SAFETY DECALS AND LABELS	11
3.1 General Information	11
3.2 How to Install Replacement Safety Decals	11
3.3 Safety Decal Locations	12
3.4 Safety Decals	12
4. NOMENCLATURE	13
5. ASSEMBLY AND SETUP	14
5.1 Assembly Process	14
6. USAGE	15
6.1 User Safety	15
6.1.1 Machine Operation Recommendations	15
6.1.2 Machine Requirements	15
6.2 Machine Specifications	15
6.3 Attaching to Machine	16
6.4 Pre-Operation Checklist	17
6.5 Usage	17
6.5.1 Picking Up a Load	17
6.5.2 Moving With a Load	19
6.5.3 Dumping the Load	19
6.6 Detaching from Machine	19
7. TRANSPORTING	21
7.1 Highway and Transport Safety	21
7.2 Pre-transport Checklist	21
8. STORAGE	22
8.1 Placing in Storage	22
8.2 Removing from Storage	22
9. MAINTENANCE	23
9.1 Maintenance Safety	23
9.2 Practice Safe Service Procedures	23
9.3 Bolt Torque Requirements	24
9.4 Welding Repairs	24
9.5 Bolt-on Cutting Edge Reversal / Replacement	24
9.5.1 Prepare	24
9.5.2 Remove Bolt-on Cutting Edge	24
9.5.3 Install the Bolt-on Cutting Edge	25
9.6 Service Record	26
10. PARTS SECTION	27
10.1 Ordering Parts	27
10.2 Contact Information	27
10.3 Safety Decals and Instructional Labels	27
10.4 SSB-72US Parts Detail	28
10.5 SSB-78LL Parts Detail	29
10.6 SSB-84US Parts Detail	30

1. Introduction



The Norden Skid Steer Bucket is an attachment that mounts to a skid steer loader or a tractor equipped with a loader having similar mounting capabilities. **It is designed specifically to move loose material.**

Note: The specific term “loader bucket attachment” will be referred to simply as “loader bucket” or “attachment” throughout the rest of this manual and may refer to any of the models covered by this manual. The term skid steer loader or small utility tractor will be referred to as “machine” throughout this manual.

Read, understand, and follow the manual carefully to become familiar with your new Norden loader bucket. Ultimately it is our desire that you will be operating your loader bucket as a seasoned professional in very little time!

This manual is intended for all models, but will show specific pictures and diagrams of the SSB-78LL loader bucket. If any specifications are different than the model shown, it will be noted.

1.1 Intended Usage

Do not use this loader bucket for any other purpose than its intended use of moving loads of loose material.

Note: Do not use an oversized machine; the loader buckets are intended to be used on machines rated up to 110 HP or a 3500 pound operating capacity.

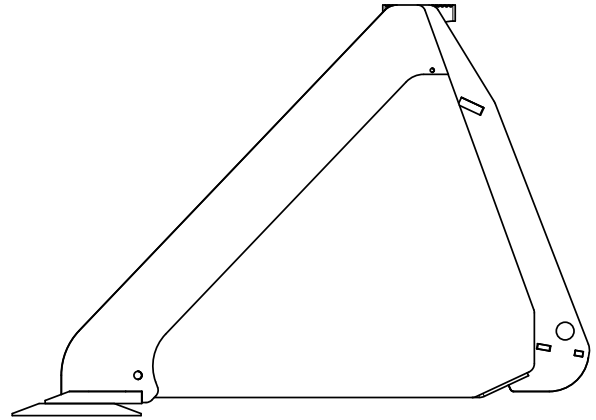
1.2 Operator Orientation

The directions left, right, front, and rear, as mentioned throughout this manual, are as seen from the operator’s seat, facing in the direction of travel.

1.3 Specifications

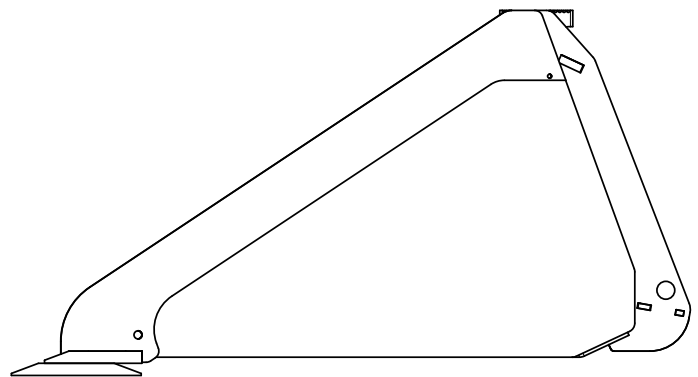
Specifications subject to change without notice.

1.3.1 SSB-72US Specifications



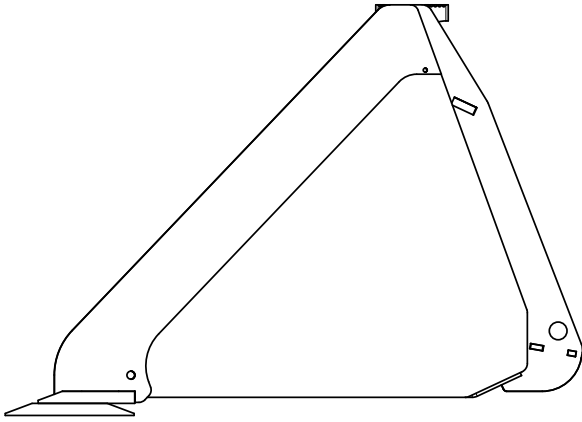
Overall Width	74"
Overall Length	36"
Overall Height	25.5"
Overall Approximate Weight	552.7 lb.
Bolt On Cutting Edge Size	3/4" x 6" x 74" 4-6(11)-4
Approx. Struck Capacity	15.7 Cu. Ft.

1.3.2 SSB-78LL Specifications



Overall Width	80"
Overall Length	42"
Overall Height	23"
Overall Approximate Weight	617 lb.
Bolt On Cutting Edge Size	3/4" x 6" x 80" 4-6(12)-4
Approx. Struck Capacity	16.4 Cu. Ft.

1.3.3 SSB-84US Specifications

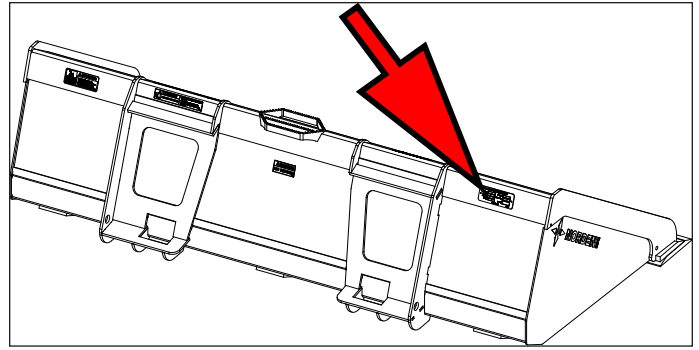


Overall Width	86"
Overall Length	36"
Overall Height	25.5"
Overall Approximate Weight	615.2 lb.
Bolt On Cutting Edge Size	3/4" x 6" x 84" 4-6(13)-4
Approx. Struck Capacity	18.3 Cu. Ft.

1.4 Serial Number Location

The loader bucket's serial number and model number are on the data plate which is located on the rear of the bucket. Please use these numbers when requesting service, seeking information, or ordering parts.

1.



Record the serial and model numbers as well as the date of purchase in the space provided for easy reference when contacting Norden Mfg LLC with questions.

Model Number _____
 Serial Number _____
 Date of Purchase _____

1.5 Product Improvements

Because Norden Mfg LLC maintains an ongoing program of product improvement, we reserve the right to make improvements in design or changes in specifications without incurring any obligation to install them on attachments previously sold.

1.6 Disposal of Equipment at End of Useful Life

The Norden Mfg LLC loader buckets are designed for the specific purpose of moving gravel and dirt. When this loader bucket is no longer capable of performing its intended use, it should be dismantled and scrapped. Do not use any materials or components from this loader bucket for any other purpose.

1.7 Unanswered Questions

If you have any questions not answered in this manual, require additional copies, or the manual is damaged, please contact your dealer or:

Norden Mfg LLC
 4210 Kinsman Road NW
 North Bloomfield, OH 44450

Phone: (877) 296-5851
 Fax: (440) 693-4336
 E-mail: parts@nordenmfg.com

The manual is also available for download at:
www.nordenmfg.com

2. Safety

2.1 General

Most work-related accidents are caused by failure to observe basic safety rules or precautions. An accident can often be avoided by recognizing potentially hazardous situations before an accident occurs. As you use and maintain the loader bucket you must be alert to potential hazards.

Improper use and/or maintenance of this loader bucket could cause a dangerous situation that results in property damage, personal injury, or death.

WARNING



Do not use the loader bucket until you read, understand, and follow the information contained in this manual and all related equipment manuals. Do not use the loader bucket for anything other than its intended purpose.



Safety precautions and warnings are provided in this manual and on the loader bucket. If these precautions and warnings are not followed, bodily injury or death could occur to you or to other persons.

Norden Mfg LLC cannot anticipate every possible circumstance that might involve a potential hazard. The warnings in this manual and on the product are, therefore, not all-inclusive. If a method of operation not specifically recommended by us is used, you must satisfy yourself that it is safe for you and for others. You should also ensure that the attachment will not be damaged or be made unsafe by the use or maintenance methods that you choose.

The information, specifications, and illustrations in this manual are based on the information that was available at the time this material was written and can change at any time.

2.2 Safety Alert Symbol



This is the safety alert symbol. It is used to alert you to potential personal injury hazards. The symbol is followed by a signal word such as “WARNING” or “CAUTION” depending on the severity of the potential hazard. Obey all safety messages that follow this symbol to avoid possible injury or death.

This manual contains WARNINGS, CAUTIONS, NOTICES, SAFETY INSTRUCTIONS, and NOTES. Warnings, Cautions, and Safety Instructions must be followed to prevent the possibility of personal injury or death due to improper operation. Notices and Notes help prevent loader bucket or property damage.

WARNING

Indicates a potentially hazardous situation which, if not avoided, COULD result in death or serious injury.

CAUTION

Indicates a potentially hazardous situation which, if not avoided, MAY result in minor or moderate injury.

NOTICE

Indicates that loader bucket or property damage can result if instructions are not followed.

SAFETY INSTRUCTIONS

Indicates specific safety-related instructions or procedures.

Note: Contains additional information important to operation or a procedure.



2.3 Safety Icons Nomenclature

This manual and the loader bucket has numerous safety icons. These safety icons provide important operating instructions which alert you to potential personal injury hazards

2.3.1 Personal Protection / Important Information


-   *Read the manual*
-  *Maintenance procedure*
-  *Eye protection*
-  *Hearing protection*
-  *Hand protection*
-  *Foot protection*
-  *First aid kit*
-  *Use proper tools*
-  *Use OEM parts*
-  *Use ROPS and seat belt*
-  *Maintain safety decals*
-  *Place in park*
-  *Remove key*
-  *Stop engine*
-  *Visibility - slow moving vehicle (SMV)*
-  *Set parking brake*

2.3.2 Prohibited Actions

-  *Do not alter or modify*
-  *Do not leave out tools*

-  *Do not weld*
-  *No riders*
-  *No children*
-  *No alcohol*
-  *No drugs*

2.3.3 Hazard Avoidance

-  *Crushing hazard*
-  *Crushing hazard*
-  *Slipping hazard*
-  *Tripping hazard*
-  *Falling hazard*
-  *Safety alert symbol*
-  *Defective or broken part*
-  *Falling hazard*
-  *Maintain safe distance*
-   *Pinch point hazard*
-  *Crush hazard*
-  *Rollover hazard*
-  *Not a lifting device*
-  *Electrocution hazard*
-  *Entanglement hazard*

2.4 General Safety

WARNING



Read, Understand, and Follow Manual

To prevent personal injury or even death, be sure you read, understand, and follow all of the instructions in this manual and other related OEM equipment manuals! This loader bucket was designed for a specific application; **DO NOT** modify or use this loader bucket for any application other than that for which it was designed. Load forks used improperly or by untrained personnel can be dangerous! Inexperienced operators should receive instruction from someone familiar with the loader bucket and the machine before being allowed to use the loader bucket.



Do Not Operate

Do not use the attachment if it is in need of repair. If you believe the loader bucket has a defect which could cause injury or death, you should immediately stop using the loader bucket.



Fall Hazard

Do not use the loader bucket attachment as a platform for standing. Do not stand on top of the loader bucket attachment at any time. Do not hang on the attachment or allow others to hang on it.



Pinch Point Hazard

Keep hands and feet away from the attachment to prevent them from getting pinched or crushed.

2.5 Machine Related Safety



Impaired User Hazard

Do not attempt to use or maintain the attachment under the influence of drugs or alcohol. Consult your doctor before using the loader bucket while taking prescription medications.



Falling Hazard

Do not allow riders on the machine or attachment at any time. Falling can result in severe injuries or death.

WARNING



Stay Clear

Clear the area of people, especially small children, before using the attachment. Under no circumstances should young children be allowed to work with or around the loader bucket.



Not A Lifting Device

Do not use the loader bucket to lift other objects.

2.6 Safety Decals

Refer to section “3. Safety Decals and Labels” on page 11 for safety recommendations related to using the loader bucket.

2.7 Operation Safety

Refer to section “6.1 User Safety” on page 15 for safety recommendations related to using the loader bucket. All applicable safety recommendations in other sections should also be followed.

2.8 Transporting Safety

Refer to “7. Transporting” on page 21 for safety recommendations related to traveling with a machine and attachment on a public roadway. All applicable safety recommendations in other sections should also be followed.

2.9 Storage Safety

Refer to section “8. Storage” on page 22 for safety recommendations related to storing the loader bucket. All applicable safety recommendations in other sections should also be followed.

2.10 Maintenance Safety

Refer to section “9. Maintenance” on page 23 for safety recommendations related to maintaining the loader bucket. All applicable safety recommendations in other sections should also be followed.

2.11 Training

Norden Mfg LLC follows the general Safety Standards specified by the Farm Equipment Manufacturers Association (F.E.M.A.), and the American National Standards Institute (ANSI). Anyone who will be using and/or maintaining the loader bucket must read and clearly understand ALL safety, operation, and maintenance information

presented in this manual, other related OEM machine manuals, and the safety decals.

If you do not understand any information in this manual, see your dealer or contact Norden Mfg LLC before proceeding.

Do not use or allow anyone else to use this attachment until all information has been reviewed. Annually review this manual before the season start-up.

Make periodic reviews of SAFETY and OPERATION a standard practice. An untrained operator is not qualified to use this loader bucket.

2.12 Authorization / Training Sign-Off Form

The authorization and training sign-off form is provided for your records to show that all personnel who will be working with the attachment have read and understand the information in this Operator Manual and have been trained in the operation of the machine the attachment is connected to. The user and the owner should both sign and date the form to indicate acceptance of the risk of using the loader bucket.

3. Safety Decals and Labels

3.1 General Information

The types of safety decals (hazard labels) and instructional labels, along with their locations on the attachment are shown in the following illustrations. Good safety practices require that you familiarize yourself with the various safety decals, the type of warning, and the area or particular operation related to that area that requires your SAFETY AWARENESS.



Think SAFETY!

Work SAFELY!

Pay close attention to the safety decals and instructional labels attached to the machine and attachment. The safety decals affixed to the attachment are reproduced in this section. If the attachment is missing a label or one is unreadable, replace the label before using the attachment.

SAFETY INSTRUCTIONS



Safety Decals and Instructional Labels

- 1. Keep safety decals or instructional labels clean and legible at all times. Use a clean, damp cloth to clean safety decals.**
- 2. Replace any missing or hard-to-read safety decals or instructional labels.**
- 3. Use care when washing or cleaning the attachment not to remove or damage the decals. When using a pressure washer to clean the attachment, avoid spraying too close to decals; high-pressure water can enter through very small scratches or under edges of decals causing them to peel or come off.**
- 4. Locations for the decals and replacement part numbers are shown in this section.**
- 5. Replacement parts must have replacement decals attached before the attachment is used.**
- 6. Decals are available from your authorized dealer or from Norden Mfg LLC at no charge.**

Contact Information

For replacement decals, contact:

Norden Mfg LLC
4210 Kinsman Road NW
North Bloomfield, OH 44450

Phone: 877-296-5851
Fax: 440-693-4336
E-mail: parts@nordenmfg.com

3.2 How to Install Replacement Safety Decals

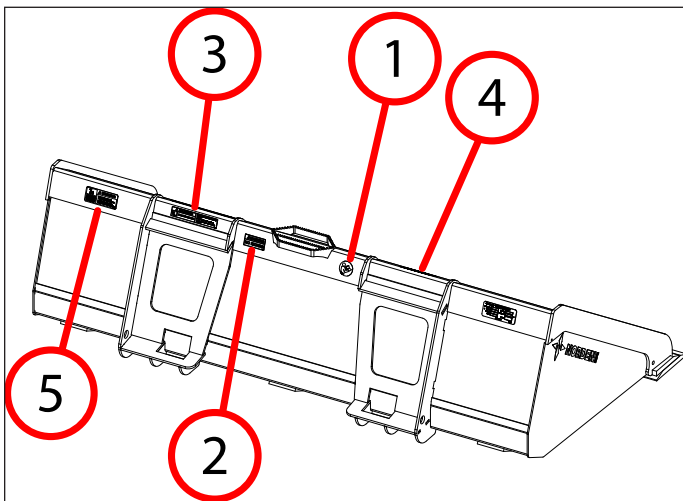
1. Clean and dry the installation area.

Note: Do not install the decals if the temperature is below 50°F.

2. Determine the exact position before you remove the backing paper.
3. Remove the backing paper.
4. Align the decal or label over the specified area and carefully press the sign to the part/frame.

Note: Small air pockets can be pierced with a pin and smoothed out using the piece of backing paper or plastic card.

3.3 Safety Decal Locations



Item	Type	Description	Qty.
1	INFORMATIONAL	Read the Manual	1
2	WARNING	No Riders	1
3	WARNING	Falling Hazard	1
4	INFORMATIONAL	Mfg Placard	1
5	WARNING	Pin Engagement	1

3.4 Safety Decals



1. INFORMATIONAL — Read the Manual



2. WARNING — No Riders



3. WARNING — Falling Hazard

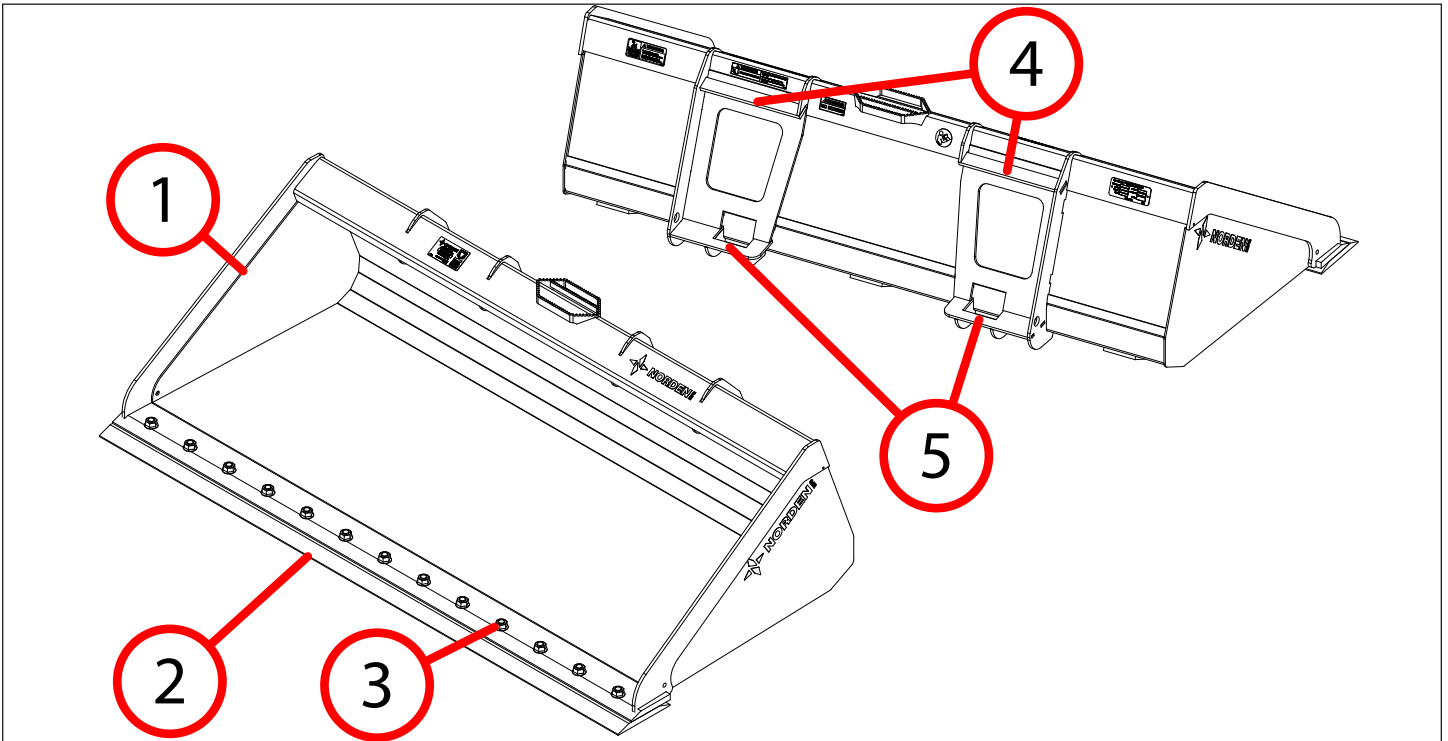


4. INFORMATIONAL — Manufacturer Placard



5. WARNING — Pin Engagement

4. Nomenclature



Item	Description
1	Loader Bucket
2	Bolt-on Cutting Edge
3	Plow Bolt and Nut
4	Attachment Plate Top Lip
5	Attachment Plate Slots

5. Assembly and Setup

5.1 Assembly Process

The loader bucket comes fully assembled from the factory. Verify that the bolts are all tightened to the specifications given on the table in section “9.3 Bolt Torque Requirements” on page 24

NOTICE

Confirm Secure Installation

Ensure the cutting edge is properly installed and securely fastened before using the loader bucket. For light-weight tractors or specific skid steer loaders, consult the Skid Steer or Tractor Operator's Manual to determine if rear ballast is required for heavy loads to maintain steering control.

6. Usage

6.1 User Safety

Refer to “2.4 General Safety” on page 8 for additional safety information.

6.1.1 Machine Operation Recommendations

WARNING



Unintentional Movement

Before leaving the operator’s seat, make sure the engine is stopped, the transmission is placed in park, the key is removed, and the parking brake is set.



Rollover Hazard

The weight of the machine, plus the loader bucket, if it rolls onto a person, could cause serious crushing injury or death.



Entanglement Hazard

If using a small compact or utility tractor, keep hands and clothing clear of any rotating parts. Stay clear of the loader bucket while the machine is moving.

SAFETY INSTRUCTIONS

The following safety instructions are provided to help prevent injury or limit loader bucket damage.

SI *It is the owner’s responsibility to make sure any person using a machine with the attachment, especially if it is loaned or rented, has been thoroughly trained on its proper and safe use.*

SI *Be certain only physically-able persons will use the attachment.*

SI *Users who have not read and understood all operating and safety instructions are not qualified to use the attachment.*

SI *If the elderly are assisting with the work, their physical limitations need to be recognized and accommodated.*

SI *Never allow children to use the attachment.*

SI *Be especially observant of the operating area and terrain – watch for loose fill, holes, rocks or other hidden hazards. Always inspect the area prior to operation.*

SI *Be careful at the edge of ditches or gullies. Be careful when working on inclines.*

SI *Do not use excessive speed when moving loads.*

SI *Allow for loader bucket length when making turns.*

6.1.2 Machine Requirements

WARNING



Machine Operator Manual

Always refer to the machine’s operator manual to ensure compatibility and maximum safety.

The machine must be equipped with a universal quick-attach system on a skid steer loader or a tractor front-end loader with compatible quick-attach adapter rated to lift the loader bucket which can weigh up to 618 pounds plus the weight of the load.

SAFETY INSTRUCTIONS

SI *Do not use an oversized machine; the loader buckets are intended to be used on machines rated up to 110 HP or a 3500 pound operating capacity.*

SI *Using the loader bucket with a machine that exceeds the specified requirements may cause machine or attachment damage, be a potential danger to the operator or bystanders, and will void any warranty.*

SI *Always review the “controls” section of the machine’s Operator Manual to be familiar with the location, settings, and function of the controls. Be familiar with all controls before using this attachment.*

6.2 Machine Specifications

This section is provided to give the operator general safety information for the machine. Always follow the OEM instructions given in the operator’s manual for the machine.

WARNING



Unintentional Movement

To avoid serious injury or death from falling, rollover, rollover, or crushing, the machine must have an approved Roll-Over Protective Structure (ROPS) or ROPS cab and seat belt.

1. The machine must be equipped with an approved Roll-Over Protective Structure (ROPS) or ROPS cab and seat belt.
 - a. If equipped with a folding ROPS structure, keep it locked in the UP position.
 - b. Only operate the machine when seated in the operator seat.
 - c. Always fasten seat belt whenever the machine is moving.
2. If working around dry grass or vegetation, to reduce the risk of fire, do not use a machine with an under-frame exhaust.
3. If the machine must travel on a public roadway, follow guidance given in "7. Transporting" on page 21.
4. Maintain all manufacturer's safety shields and guards

6.3 Attaching to Machine

WARNING



Pinch Point Hazard

Use caution when connecting the attachment to the

machine. Keep hands and feet from under the attachment and clear of pinch points between bucket and machine. Do not allow anyone to stand between the machine and loader bucket during attachment process.

1. Drive carefully towards the loader bucket, making sure the loader coupler is parallel to the attachment plate.
2. Tilt the top of the loader coupler slightly forward in relation to the attachment plate.
3. Guide the top of the loader coupler under the top lip of the attachment plate.
4. Raise and curl the loader coupler until the attachment lifts and the back surface of the

attachment rests flat and firmly against the front surface of the coupler.

5. Once the attachment is fully supported, lower the lift arm until the attachment is slightly above the ground surface. Make sure the attachment remains firmly against the loader coupler.
6. If your machine is equipped with hydraulically operated locking pins, activate the coupler lock at this time; in this case, skip Steps 7, 8, and 9.
7. If operating a skid steer, turn off the engine, unfasten the seat belt, raise the restraint bar (if equipped), and exit the operator's compartment. If operating a tractor, properly shut down the tractor.

WARNING



Unintentional Movement

Before leaving the

operator's seat, make sure the engine is stopped, the transmission is placed in park, the key is removed, and the parking brake is set.

8. Push the two latch handles down (over center) to lock the lock pins into the attachment plate slots on the attachment, securing it to the coupler. Make sure the locking handles are locked into position to prevent the pins from releasing.

WARNING



Injury Hazard

To avoid serious injury or death caused from falling attachment:

Lock pins must completely engage attachment plate slots.



Crush Hazard

Do not stand under raised attachment.

9. Reenter the machine and start the engine after re-fastening the seat belt.
10. Raise the attachment and gradually roll it out.
 - If the attachment is not properly secured to the coupler, lower the lift arm and repeat the mounting procedure.
11. Visually inspect the engagement of the lock pins in the attachment's lower slots. The lock pins should fully extend through the bottom slots in the attachment hitch plate.

12. Before using the attachment, the operator must operate it through its full range of motion and confirm that the attachment is secure and safe.

6.4 Pre-Operation Checklist

Before each use of the attachment, the following areas should be checked.

Checklist Before Each Use	
<input checked="" type="checkbox"/>	Task
	Make sure the loader bucket is positively attached to the machine. Refer to "6.3 Attaching to Machine" on page 16.
	If the machine uses tires, make sure they are inflated properly and the lug nuts are tight.
	Inspect the tires of the machine for full operational reliability. Failure of the tires could result in damage to the machine, load, or attachment.
	Make sure the loader bucket is not bent or cracked.
	Make sure the operating area is clear, especially of children and animals.

6.5 Usage

Before using the attachment, the operator must have a complete understanding of how to operate the machine including all controls, and how to use the attachment.

The operator should read and understand the Safety and Operation sections of the machine Operator's Manual. It is important to note that these manuals must be read and explained to any operator who cannot read. It is crucial to never allow anyone to operate the machine or use the attachment without complete operating instructions.

To ensure safety to the operator, bystanders, and equipment, the operator must become familiar with the surrounding work area and any obstacles and hazards contained within before starting any operation. Special attention should be paid to foreign debris, rough terrain, steep slopes, bystanders, or animals in the area.

If the operator is not already familiar with the process, it is recommended to practice lifting, lowering, maneuvering, and placing a load on a level site until the confidence and skill needed to safely move loads is achieved. It is important to follow the safety operating procedures that are spelled out in this Operator's Manual.

WARNING



Crush Hazard

When handling loads, improper use of the machine can result in serious injury or death to the machine operator. This could be caused by the contents of the load falling or rolling backwards into the operator's station. Therefore, it is important to handle loads safely.

CAUTION



Tip Over Hazard

It is important not to exceed 3,500 lbs. or 83% of the lift capacity of the machine. The operator should not lift the load too high, creating an unstable and unsafe situation. The operator should also avoid tilting the load too far forward, setting up a situation that could cause the load empty from the bucket.

The operator must travel at a safe speed for ground conditions. Travel slowly over rough ground or when making turns. Working on or around slippery or sloped areas could cause the operator to lose control of the machine.

The operator must not allow bystanders, pets, or livestock to approach the danger zone of the working area.

The operator must not leave the machine with the attachment raised off the ground.

6.5.1 Picking Up a Load

1. Look for overhead obstructions and wires.

WARNING



Risk of electric shock, crushing, and ramming.

Be sure to keep a safe distance between the loader and power lines or barn roofs when driving with the raised loader. Do not touch the tractor, loader, or tool if they come into contact with a live electric cable. Back the tractor away from the cable or wait until it is de-energized.

NOTICE

Care must be taken to ensure there is enough overhead clearance and no potential hazards or obstructions that could interfere with the lifting and placing of the loads.

2. Verify that the load does not exceed the smaller of the two lift capacities:

- Rated lift capacity of the loader bucket.
- 83% of the rated lift capacity of the machine.

Note: Using 83% of the rated lift capacity accounts for increased loader stresses caused by the extended loader bucket and ensures proper tire rating.

NOTICE

Prying with the bucket's edge or using the bucket with excessive horsepower can damage the bucket and void its warranty.

3. Center the bucket on the material to be picked up.

WARNING



Before digging

Check for hidden live electrical cables. Do not leave the driver's seat if any part of the tractor, loader, or tool contacts a live electric cable. Avoid touching the tractor, loader, or tool and the ground simultaneously. Back the tractor away from the cable or wait until it is de-energized.



Carefully approach the loading area, ensuring no objects will come back into the operator's space, causing serious injury or death.



If working on an uphill slope, drive straight upwards, fill the bucket, and reverse downhill while lowering the loader as far as possible. Avoid driving along the side of a slope to prevent overturning.

SAFETY INSTRUCTIONS

Transport loads at a height that maintains a clear line of sight and keep the load low to the ground when possible to enhance stability.

4. Slowly drive into the pile without ramming the bucket.

WARNING



Bystander Hazard

Keep all bystanders at a safe distance when entering and picking up a load. Objects can shift or be thrown suddenly as the bucket makes contact with the load, causing serious injury or death. Avoid ramming the bucket into a pile or hooking a chain to the bucket for load securing, as it can damage the attachment.

5. Lift the load of material a short distance and tilt the bucket back before traveling.

6. Confirm that the load is balanced and securely positioned.

Note: Ensure the material is properly secured before traveling. Have good control of the load, releasing and recapturing it if it's not secure.

7. Verify that no animals or bystanders are behind you and that it is safe to reverse.

8. Back the load out of the pile slowly, ensuring it clears all other obstacles.

9. Position the load at a safe, low traveling height before transferring it to the unloading site. It is recommended to keep it two to four inches above the floor.

Note: To minimize jerking, stop and start the loader gradually when lowering or lifting loads.

WARNING



Risk of falling.

Do not use the loader or the attachment as a working platform. Do not lift or transport people using the loader or attachment.



Avoid standing, walking, or working under or beside a raised loader. Keep everybody, especially children and animals, away from the work area. Always keep an eye on your workplace.



Never carry out work with the attachment that requires another person to be in the vicinity of the loader.

NOTICE

No Chains.

Do not attach chains intended for lifting or securing loads to the loader bucket, as it may cause damage.

SAFETY INSTRUCTIONS

For tractor operators only. Always ensure the tractor is properly ballasted before attempting to lift any load with the attachment.

6.5.2 Moving With a Load

1. Always yield to pedestrians.
2. Tilt the load back slightly, adjusting the tilt angle of the attachment to prevent it from aiming at the driver when the load is raised.
3. Keep the load low, preferably two to four inches above the floor.
4. Continuously scan all sides for bystanders or other traffic.

SAFETY INSTRUCTIONS

Make sure that the work area is clear of children, animals, and other obstacles before using the attachment. This is particularly important in areas with higher noise levels or quiet cabs, as you may not hear people shouting.

5. If the load obstructs your view, travel in reverse.
6. Maintain a safe and controlled speed, reduce speed when turning, and avoid sudden braking.
7. Provide adequate clearance while turning to avoid contact between the loader buckets, load, and obstacles such as storage racks, buildings, trees, or fences.
8. When traveling over ramps or inclines, keep the load on the "uphill" side of the machine.
9. Whenever possible, travel straight on grades, ramps, and inclines, avoiding turns.
10. Only raise or lower the load when the machine is stopped, not during travel.
11. Reduce speed when traveling over rough or hilly terrain.
12. Do not transport loads on public roadways.
13. If using public roadways, ensure safe transportation to allow faster vehicles to pass.
14. Plan your route to avoid heavy traffic.
15. Keep equipment away from electrical power lines and place orange warning signs under

overhead electrical power lines to indicate the danger.

6.5.3 Dumping the Load

1. Bring the machine to a stop in front of the desired location for load placement.
2. Gradually raise the load to the required height.
3. Move the machine forward slowly with the load raised until it is positioned squarely and directly above the final destination.
4. Tilt the front of the bucket down to release the load. If necessary, raise the bucket up to allow the load to fully discharge.
5. Once the load has settled onto the pile, rotate the front of the bucket level.
6. Before reversing, check all sides for bystanders or other traffic.
7. After the load has settled, slowly back up while watching for clearances, pedestrians, and other traffic.
8. Leave enough clearance when turning and/or lowering the bucket to prevent it from making contact with obstacles such as vehicles, buildings, trees, or fences.
9. Lower the bucket to transporting height (low to the ground) before moving again.

6.6 Detaching from Machine

CAUTION



Pinch / Crush Hazard

Use caution when disconnecting the attachment from the machine.

Keep hands and feet from under the attachment and clear of pinch points. Do not allow anyone to stand near the machine or attachment when disconnecting.

1. Move the machine onto a flat, level, solid surface. Lower the loader bucket slightly above the surface with the front of the bucket slightly higher than the rear.
2. If your machine is equipped with hydraulically operated locking pins, retract the coupler lock at this time; in this case, skip Steps 3, 4, and 5.
3. Shutdown the machine properly without lowering the loader bucket.

⚠ WARNING



**Unintended
Movement**

Before leaving the

operator's seat, make sure the engine is stopped, the transmission is placed in park, the key is removed, and the parking brake is set.

4. To unhook the loader bucket, pull up the lock handles to remove the pins from the bottom slots in the attachment plate.
5. Return to the machine, restart the engine,
6. Tilt the top of the hitch plate slightly forward toward the loader bucket.
7. Slowly lower the loader bucket to the ground, allowing the top lip and loader hitch to separate.
8. Gradually reverse the machine, ensuring that the loader hitch does not interfere with the loader bucket.

7. Transporting


7.1 Highway and Transport Safety

This section is provided to give the operator general safety information for the machine. Always follow the OEM instructions given in the operator's manual for the machine.

Refer to "2.4 General Safety" on page 8 for additional safety information.

SAFETY INSTRUCTIONS

SI *Make sure the machine used is in good operating condition according to the OEM user's manual.*

SI  *When traveling the attachment on the highway, make sure the machine has a clearly visible "Slow Moving Vehicle" placard.*

SI *Use approved accessory lighting, flags, or other necessary warning devices to protect operators of other vehicles on the highway during daylight and nighttime transport. Various safety lights and devices are available from the OEM of your machine.*

SI *Do not allow anyone to ride on the machine or the loader bucket.*

SI *Always drive at a safe speed relative to conditions, and ensure that the speed is low enough for an emergency stop. Keep speed to a minimum.*

SI *Reduce speed prior to turns to avoid the risk of overturning.*

SI *Always keep the machine in gear to provide engine braking when going downhill. Do not coast.*

SI *Be a safe and courteous driver. Always yield to oncoming traffic in all situations, including narrow bridges, intersections, etc. Plan your route to avoid heavy traffic.*

SI *Travel on roadways in such a way that faster moving vehicles can pass safely.*

SI *Always travel with the attachment in a position to provide maximum visibility at all times. Make allowances for increased length and weight of the loader bucket when making turns, stopping, etc.*

7.2 Pre-transport Checklist

1. Before transporting, make sure the maintenance on the machine is current.
2. If applicable, check the tire pressures on the machine, and correct if necessary.
3. Make sure the attachment is securely attached to the machine. Always inspect the loader bucket and frame for damage or abnormal wear before attaching.
4. Prior to traveling on a public road, have an observer confirm all running lights, brake lights, turn signals, and hazard lights are working on the machine.
5. Verify the brakes are operating correctly.

8. Storage

Refer to “2.4 General Safety” on page 8 for additional safety information.

CAUTION



Stay Clear

Do not permit anyone, especially children to play on or around the stored loader bucket. Store the loader bucket in an area away from human activity.

SAFETY INSTRUCTIONS

SI *Do not store the loader bucket where it will be exposed to livestock. Damage and livestock injury could result.*

8.1 Placing in Storage

1. Thoroughly wash the attachment with a pressure washer or water hose to remove all loose dirt, mud, or debris.
2. Select an area that is dry, level, and free of debris (inside a building is ideal). Move the loader bucket to its storage area.
3. Follow instructions in “6.6 Detaching from Machine” on page 19.

8.2 Removing from Storage

1. Attach the loader bucket to the machine following the procedure in section “6.3 Attaching to Machine” on page 16.
2. Before placing the loader bucket back into service, replace any worn or defective parts and perform the “6.4 Pre-Operation Checklist” on page 17.

9. Maintenance

Good maintenance is the owner's and operator's responsibility. Poor maintenance shortens loader bucket life and is an invitation for problems.

Norden Mfg LLC will not claim responsibility for use of unapproved parts and/or accessories and other damages as a result of their use.

If the attachment has been altered in any way from its original design, Norden Mfg LLC does not accept any liability for injury or warranty.

9.1 Maintenance Safety

WARNING



Unintended Movement

If the attachment is attached to a machine, make sure the engine is stopped, the transmission is placed in park, the key is removed, and the parking brake is set.



Personal Protection Equipment

Wear personal protection equipment (PPE), which may include safety glasses, safety shoes, gloves, etc. appropriate for the work site and working conditions.



No Unauthorized Modifications

Do not modify the attachment or safety devices. Unauthorized modifications may impair the function of the attachment, or create safety hazards, and will void the warranty. If the loader bucket has been altered in any way from the original design, Norden Mfg LLC does not accept any liability for injury or warranty.



Damaged Parts Hazard

Do not use the attachment if any parts are damaged. If the loader bucket is believed to have a defect which could cause it to work improperly, immediately stop using it and remedy the problem before continuing.



Unintended Consequences

Do not weld on the loader bucket. Doing so will cause a stress point which will result in failure of the loader bucket.

WARNING



Crush Hazard

Always set the loader bucket on blocks or on the ground when performing maintenance.



Good Working Condition

Keep all parts in good working condition and properly installed. Fix damage immediately. Replace worn or broken parts.



OEM Replacement Parts

If replacement parts are necessary, genuine factory replacement parts must be used to restore the attachment to its original specifications. Unapproved parts could create a safety hazard. Norden Mfg LLC will not accept responsibility for damages as a result of the use of unapproved parts.

9.2 Practice Safe Service Procedures

CAUTION



Understand service procedures before doing any work. Keep the work area clean and dry.



Keep all parts in good working condition and properly installed. Replace worn or broken parts immediately.



A first aid kit should be readily accessible while performing maintenance on the loader bucket.



Do not leave tools lying around the work area. Follow good shop practices. Keep service area clean and dry. Be sure electrical outlets and tools are properly grounded. Use adequate light. After servicing, be sure all tools, parts and service equipment are removed.



Use the correct tools, jacks, hoists, or other components that have the capacity for the job.

9.3 Bolt Torque Requirements

WARNING



Equipment Failure

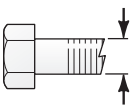


The proper torque value for bolts and cap screws is identified by their head markings. Replacing higher “grade” bolts (Grade 5) with lower grade bolts will lead to equipment failure and could result in injury or death. Always use replacement bolts with the same grade markings as the removed bolt.

It is extremely important to apply and maintain proper torque on all bolts. Use a torque wrench to assure the proper amount of torque is being applied to the fastener.

Start all bolts or nuts by hand to prevent cross-threading.

Torque figures indicated in the chart are used for non-greased or non-oiled threads unless otherwise specified. Therefore, do not grease or oil bolts or cap screws unless otherwise specified in this manual. When using locking elements, increase torque values by 5%.

The chart gives correct torque values for various bolts and cap screws. Tighten all bolts to the torque specified in the chart unless otherwise noted. Check tightness of bolts periodically, using the bolt torque chart as a guide. Always replace hardware with the same grade bolt.

Bolt Diameter 	English Bolt Torque Specifications			
	Grade 5  3 Radial Lines		Grade 8  6 Radial Lines	
	ft. lbs.	N·m	ft. lbs.	N·m
1/4"	9	12	12	17
5/16"	19	25	27	36
3/8"	33	45	45	63
7/16"	53	72	75	100
1/2"	80	110	115	155
9/16"	115	155	165	220
5/8"	158	215	220	305
3/4"	290	390	398	540
7/8"	420	570	650	880
1"	630	850	970	1320

9.4 Welding Repairs



Before performing any type of welding repair to the loader bucket, contact Norden Mfg

LLC for approval. Repair welding must be done with care and with procedures that may be beyond the capabilities of the ordinary welder.

WARNING



Personal Injury Hazard

Repairs or modifications to the loader bucket could result in serious injury or death to the operator or bystander should these repairs fail. Do not weld or repair cutting edge. If damaged, replace cutting edge with new OEM parts.

NOTICE

Anyone performing a welding repair should be certified in accordance to the American Welding Society (AWS) standards.

9.5 Bolt-on Cutting Edge Reversal / Replacement

For reversal or replacement of the bolt-on cutting edge, carefully follow these instructions.

CAUTION

Follow these instructions carefully for safe cutting edge installation on the loader bucket to avoid personal injury or equipment damage.

CAUTION

Pinching hazard! Keep hands and fingers clear of the area between bucket and cutting edge.

9.5.1 Prepare

1. Thoroughly clean the bolt-on cutting edge and bolts using a pressure washer.
2. Find a flat working area.
3. Lower the machine’s arms until the rear of the bucket rests on a block positioned under a rear corner of the bucket. Do not rely on the hydraulic system to hold the loader bucket up.
4. Roll the bucket back so that the front of the bucket is tipped up.
5. Ensure that multiple people are available for lifting heavy objects to maintain safety.

9.5.2 Remove Bolt-on Cutting Edge.

1. It is recommended to use new plow bolts. The old bolts can be recycled.

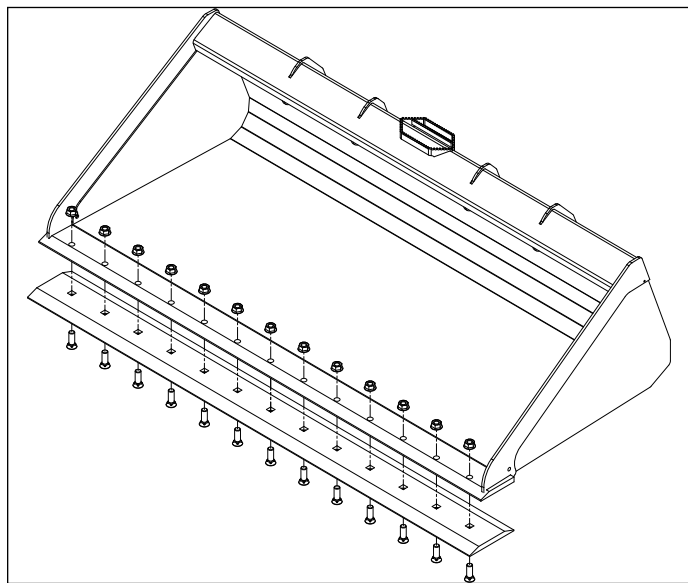
2. Clean any exposed threads on the bolts before attempting to remove the nuts.

Note: For blade reversal, remove all bolts except the middle one. Loosen it a few threads to allow it to act as a pivot point for swinging the blade around. Replace it after adding a few other new bolts.

3. Use a high-powered impact tool to remove the nuts. If a cutting torch is necessary to remove the old bolts, exercise caution to avoid damaging the bucket with the flame. Only trained and safety-conscious personnel should operate a cutting torch, following the safety guidelines provided by the manufacturer of the torch.

WARNING

Prevent Cutting Edge from Falling
The cutting edge is heavy, and serious personal harm can occur if it falls.



9.5.3 Install the Bolt-on Cutting Edge

1. Position the new cutting edge and clamp it in place, ensuring correct orientation of the bevel.

Note: An easy installation method is to place the bolt-on cutting edge underneath the bucket, perpendicular to it, and align the center holes. Lift one end of the blade and tilt it up until the bolt fits through. Loosely fasten the nut, then rotate the blade to be parallel to the front of the bucket.

2. Install all bolts and finger tighten the nuts. An alignment tool may be used to correct alignment.

3. After installing all the bolts, tighten every other nut first, then go back and tighten the skipped bolts. Follow the torque specifications provided in the table mentioned in section “9.3 Bolt Torque Requirements” on page 24

WARNING

Prevent Cutting Edge from Falling
The cutting edge is heavy, and serious personal harm can occur if it falls.

NOTICE

Confirm Secure Installation

Ensure the cutting edge is properly installed and securely fastened before using the loader bucket.

Note: It is recommended to use blue Loctite or a similar product to prevent the nuts from loosening.

9.6 Service Record

The service period recommended is based on normal operating conditions. Severe or unusual conditions may require more frequent service.

Copy this page to continue record.

Hours and Serviced By													
Maintenance													
Every 8 Hours of Use													
Visually inspect the cutting edge for hairline cracks.													
Visually inspect the bolt-on cutting edge for wear.													
Annually													
Make sure all fasteners are tightened to proper torque. Refer to "9.3 Bolt Torque Requirements" on page 24.													
Inspect and replace damaged safety decals or instructional labels.													
Wash the loader bucket.													
Inspect attachment frame for cracking or damage.													

10. Parts Section

10.1 Ordering Parts

Norden Mfg LLC manufactures a quality product that requires very little maintenance or repair. However, should a part break or become damaged, our knowledgeable staff can make sure you receive the part(s) to put your loader bucket back into operation.

10.2 Contact Information

For replacement decals, questions, or to order parts, contact:

Norden Mfg LLC
4210 Kinsman Road NW
North Bloomfield, OH 44450

Phone: 877-296-5851

Fax: 440-693-4336

E-mail: parts@nordenmfg.com

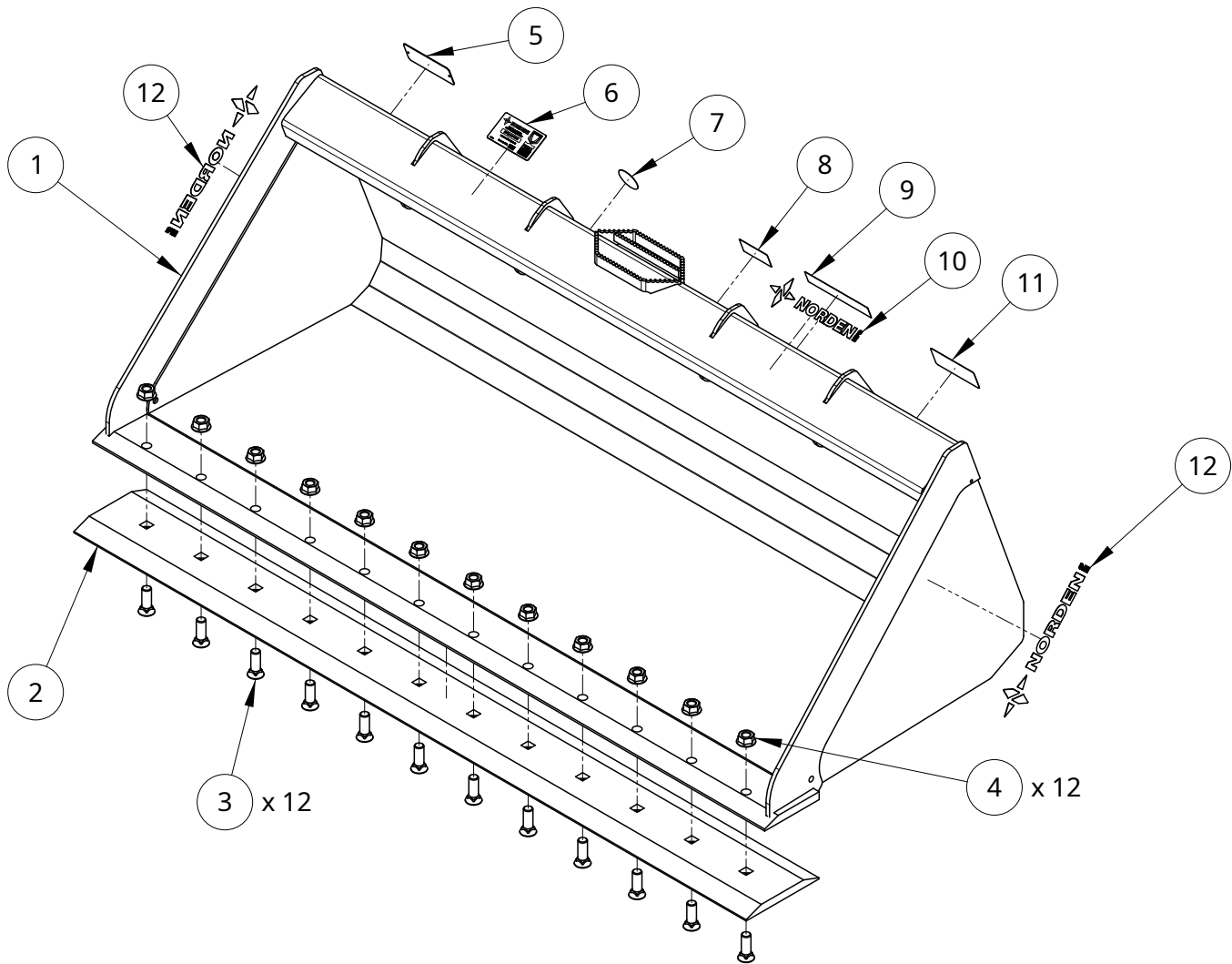
10.3 Safety Decals and Instructional Labels

Safety decals and instructional labels provide a vital role in helping to reduce injuries and/or possibly even death. To ensure the greatest level of safety, all decals must be in place and legible or all warranties are void. Remember, it is the user's responsibility to maintain these decals and labels.



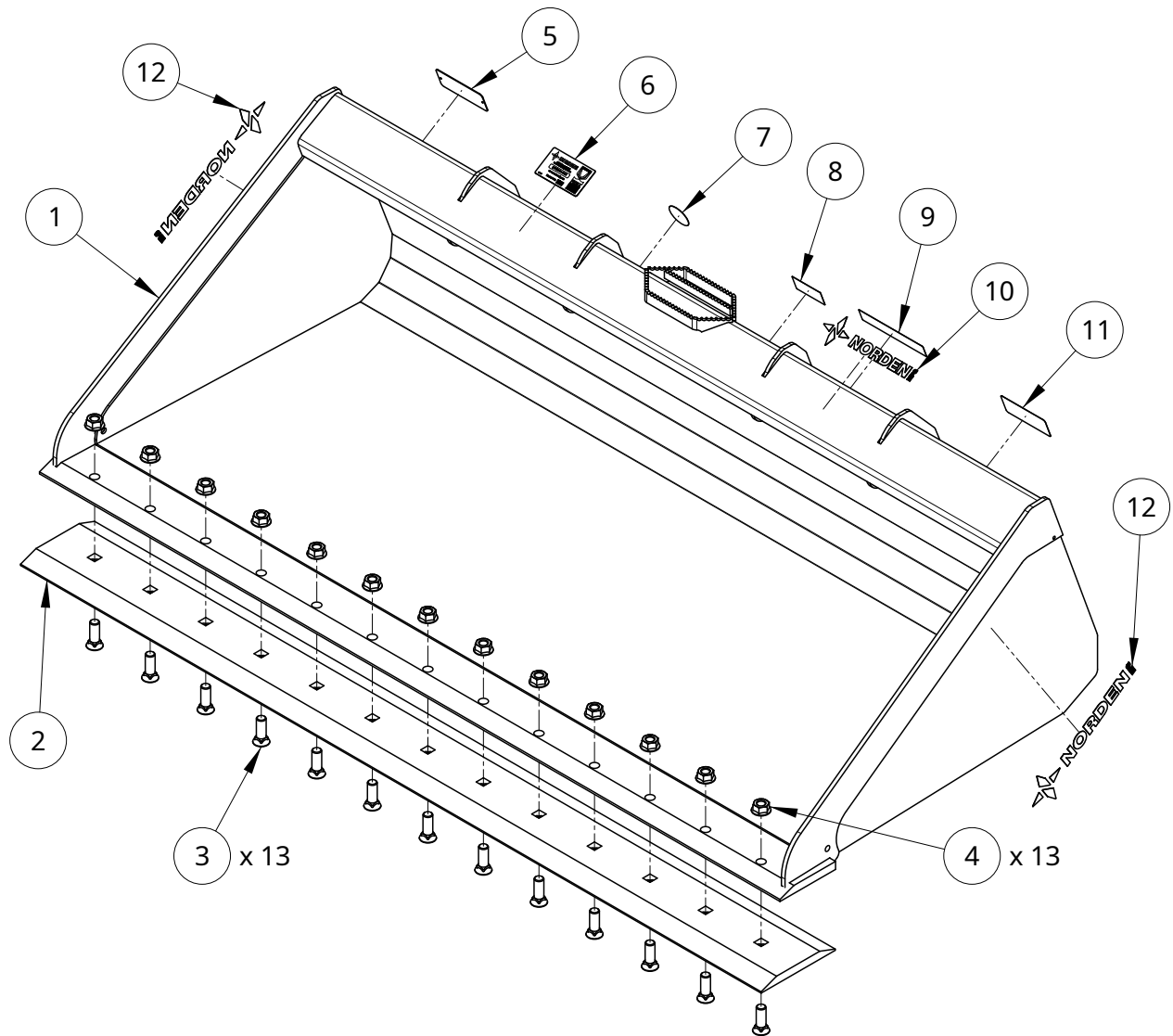
To prevent serious injury or death which could result from not following posted safety instructions, make sure all decals are attached to any replacement part.

10.4 SSB-72US Parts Detail



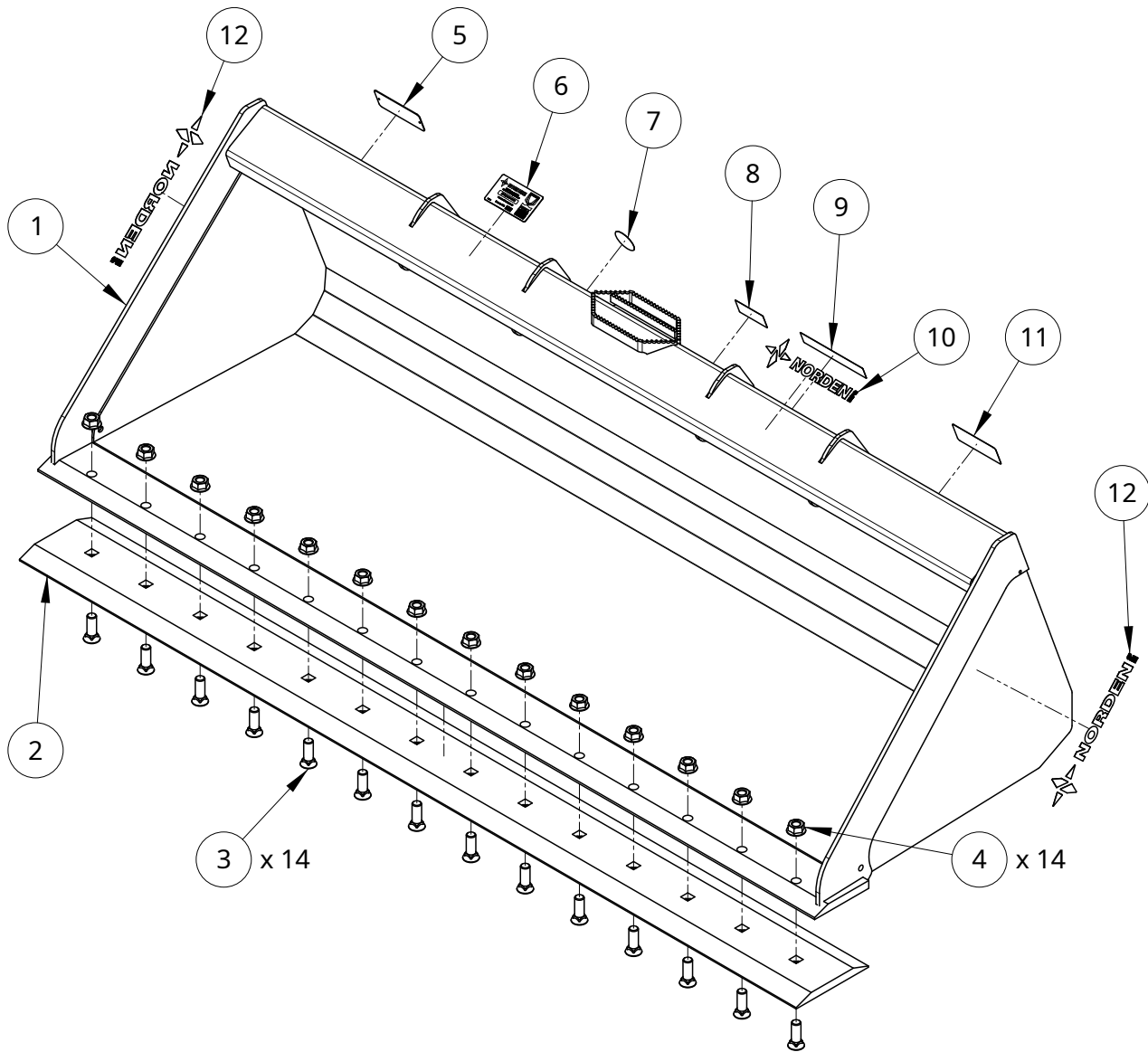
Item	Quantity	Part number	Name	Finish
1	1	1029710	SSB Weldment	Black
2	1	1027150	Bolt-On Cutting Edge, 74", 4-6(11)-4	Black
3	12	1029370	Plow Bolt, #3 Domed Head, 5/8"-11 x 2" Grade 8	Zinc
4	12	1029380	5/8"-11 Grade 8 Flange Hex Nut	Zinc
5	1	1027460	1027460 Data Plate	
6	1	1027180	Decal - Manufacturing Small	
7	1	1024330	Decal - Read Manual	
8	1	1028630	Decal - Warning No Riders	
9	1	1028650	Decal - Falling Hazard horizontal	
10	1	1014760	Norden Logo 1"	
11	1	1027140	Decal - SS Lock Warning	
12	2	1027400	Norden Logo 1.375"	

10.5 SSB-78LL Parts Detail



Item	Quantity	Part number	Name	Finish
1	1	1025990	SSB Weldment	Black
2	1	1027160	Bolt-On Cutting Edge, 80", 4-6(12)-4	Black
3	13	1029370	Plow Bolt, #3 Domed Head, 5/8"-11 x 2" Grade 8	Zinc
4	13	1029380	5/8"-11 Grade 8 Flange Hex Nut	Zinc
5	1	1027460	1027460 Data Plate	
6	1	1027180	Decal - Manufacturing Small	
7	1	1024330	Decal - Read Manual	
8	1	1028630	Decal - Warning No Riders	
9	1	1028650	Decal - Falling Hazard horizontal	
10	1	1014760	Norden Logo 1"	
11	1	1027140	Decal - SS Lock Warning	
12	2	1027400	Norden Logo 1.375"	

10.6 SSB-84US Parts Detail



Item	Quantity	Part number	Name	Finish
1	1	1029670	SSB Weldment	Black
2	1	1027170	Bolt-On Cutting Edge, 86", 4-6(13)-4	Black
3	14	1029370	Plow Bolt, #3 Domed Head, 5/8"-11 x 2" Grade 8	Zinc
4	14	1029380	5/8"-11 Grade 8 Flange Hex Nut	Zinc
5	1	1027460	1027460 Data Plate	
6	1	1027180	Decal - Manufacturing Small	
7	1	1024330	Decal - Read Manual	
8	1	1028630	Decal - Warning No Riders	
9	1	1028650	Decal - Falling Hazard horizontal	
10	1	1014760	Norden Logo 1"	
11	1	1027140	Decal - SS Lock Warning	
12	2	1027400	Norden Logo 1.375"	



NORDEN MFG

Norden Mfg LLC
4210 Kinsman Rd NW
North Bloomfield, OH 44450

(877) 296-5851
www.nordenmfg.com
support@nordenmfg.com